

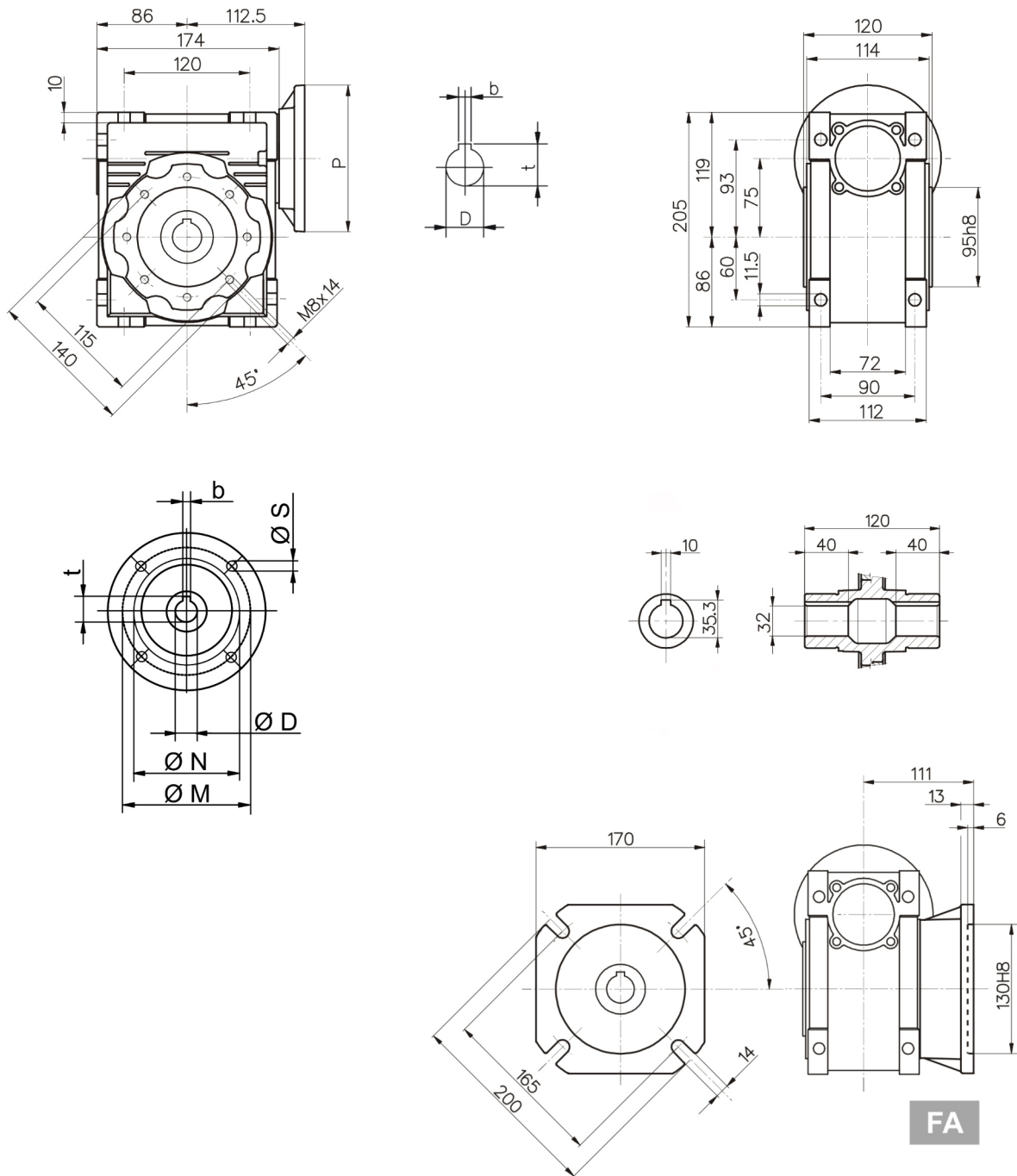
# Schneckengetriebe WGR 075

## Sonderhohlwelle Ø32



**BLECHER**  
MOTOREN ...seit 1900

### Abmessungen



| WGR 075     |    |   |      |     |     |     |      |
|-------------|----|---|------|-----|-----|-----|------|
| IEC         | D  | b | t    | P   | M   | N   | S    |
| 71 B5       | 14 | 5 | 16,3 | 160 | 130 | 110 | 9    |
| 80 B5       | 19 | 6 | 21,8 | 200 | 165 | 130 | 11   |
| 80 B14      | 19 | 6 | 21,8 | 120 | 100 | 80  | 7    |
| 90 B5       | 24 | 8 | 27,3 | 200 | 165 | 130 | 11   |
| 90 B14      | 24 | 8 | 27,3 | 140 | 115 | 95  | 9    |
| 100/112 B5  | 28 | 8 | 31,3 | 250 | 215 | 180 | 13,5 |
| 100/112 B14 | 28 | 8 | 31,3 | 160 | 130 | 110 | 9    |

Abmessungen in mm

Ausführung nach DIN EN / IEC 60034-1; Technische Änderungen und Irrtümer vorbehalten

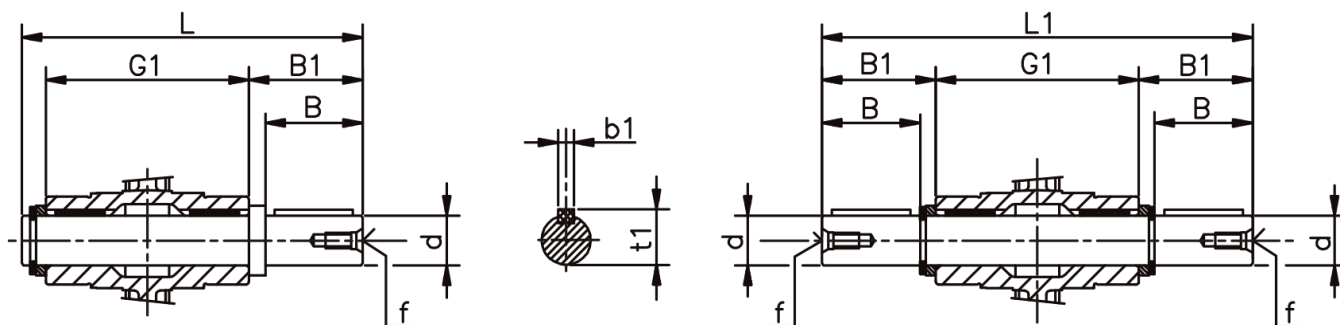
Blecher Motoren GmbH, Wilhelm-Röntgen-Straße 16-18, D-63477 Maintal

Tel.: 06181 / 428994-0, Fax 06181 / 428994-11, www.blecher.de

# Schneckengetriebe WGR 075 Steckwelle



**BLECHER**  
MOTOREN ...seit 1900



**AS**

**AB**

|            | d     | B   | B1    | G1  | L     | L1   | f   | b1 | t1   |
|------------|-------|-----|-------|-----|-------|------|-----|----|------|
| <b>025</b> | 11 g6 | 23  | 25,5  | 50  | 81    | 101  | x   | 4  | 12,5 |
| <b>025</b> | 9 g6  | 23  | 25,5  | 50  | 81    | x    | x   | 3  | 10,0 |
| <b>025</b> | 10 g6 | 23  | 25,5  | 50  | 81    | x    | x   | 4  | 11,5 |
| <b>030</b> | 14 g6 | 30  | 32,5  | 63  | 102   | 128  | M6  | 5  | 16,0 |
| <b>030</b> | 12 g6 | 25  | 27,5  | 63  | 97    | x    | x   | 4  | 13,5 |
| <b>030</b> | 15 g6 | 30  | 32,5  | 63  | 101,5 | x    | M6  | 5  | 17,0 |
| <b>030</b> | 16 h6 | 30  | 32,5  | 63  | 101,5 | x    | M6  | 5  | 18,0 |
| <b>040</b> | 18 h6 | 40  | 43,0  | 78  | 128   | 164  | M6  | 6  | 20,5 |
| <b>040</b> | 19 h6 | 40  | 43,0  | 78  | 128   | a.A. | M6  | 6  | 21,5 |
| <b>040</b> | 20 h6 | 50  | 53,0  | 78  | 138   | x    | M6  | 6  | 22,5 |
| <b>050</b> | 25 h6 | 50  | 53,5  | 92  | 153   | 199  | M10 | 8  | 28,0 |
| <b>050</b> | 24 h6 | 50  | 53,5  | 92  | 153   | a.A. | M10 | 8  | 26,5 |
| <b>063</b> | 25 h6 | 50  | 53,5  | 112 | 173   | 219  | M10 | 8  | 28,0 |
| <b>063</b> | 28 h6 | 50  | 53,5  | 112 | 173   | a.A. | M10 | 8  | 31,0 |
| <b>063</b> | 30 h6 | 60  | 63,5  | 112 | 183   | x    | M10 | 8  | 33,0 |
| <b>075</b> | 28 h6 | 60  | 63,5  | 120 | 192   | 247  | M10 | 8  | 31,0 |
| <b>075</b> | 30 h6 | 60  | 63,5  | 120 | 192   | x    | M10 | 8  | 33,0 |
| <b>075</b> | 35 h6 | 80  | 84,5  | 120 | 213   | a.A. | M12 | 10 | 38,0 |
| <b>090</b> | 35 h6 | 80  | 84,5  | 140 | 234   | 309  | M12 | 10 | 38,0 |
| <b>090</b> | 38 h6 | 80  | 84,5  | 140 | 234   | a.A. | M12 | 10 | 41,0 |
| <b>110</b> | 42 h6 | 80  | 84,5  | 155 | 249   | 324  | M16 | 12 | 45,0 |
| <b>110</b> | 40 h6 | 80  | 84,5  | 155 | 249   | x    | M16 | 12 | 43,0 |
| <b>130</b> | 45 h6 | 80  | 85,0  | 170 | 265   | 340  | M16 | 14 | 48,5 |
| <b>130</b> | 48 h6 | 110 | 115,0 | 170 | 295   | x    | M16 | 14 | 51,5 |
| <b>150</b> | 50 h6 | 110 | 115,0 | 170 | 295   | x    | M16 | 14 | 53,5 |
| <b>150</b> | 55 h6 | 110 | 115,0 | 200 | 325   | x    | M16 | 16 | 59,0 |

verfügbare Sonderwellen

Abmessungen in mm

Ausführung nach DIN EN / IEC 60034-1; Technische Änderungen und Irrtümer vorbehalten

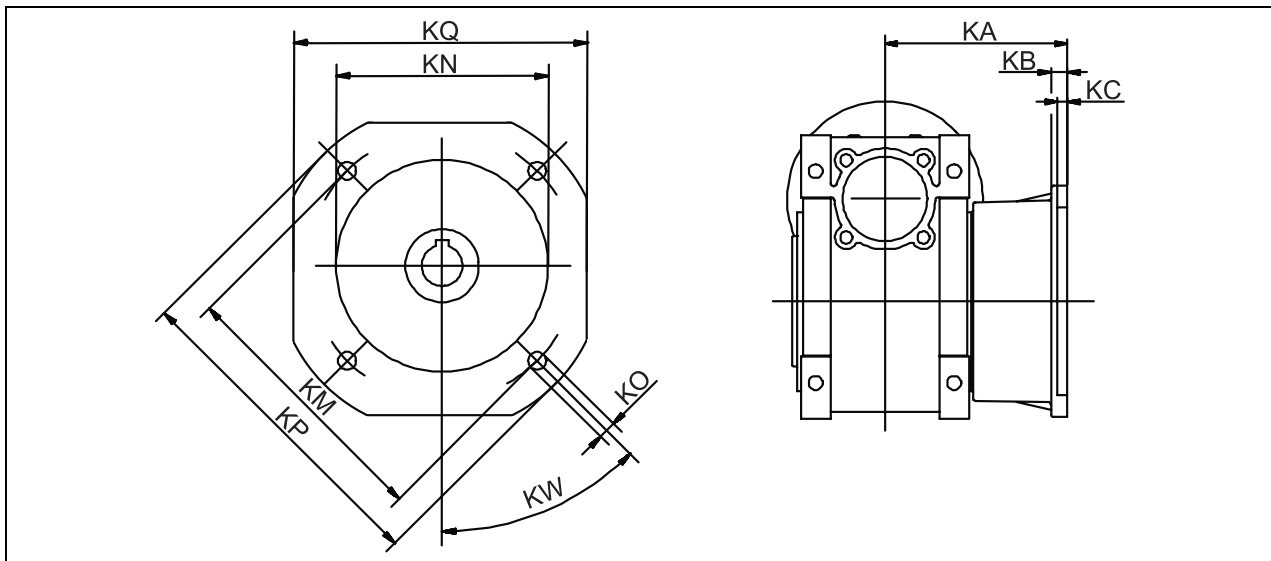
Blecher Motoren GmbH, Wilhelm-Röntgen-Straße 16-18, D-63477 Maintal

Tel.: 06181 / 428994-0, Fax 06181 / 428994-11, www.blecher.de

# Schneckengetriebe WGR 075 Abtriebsflansch



**BLECHER**  
MOTOREN ...seit 1900



|           |    | 025 | 030  | 040 | 050  | 063 | 075 | 090 | 110 | 130 | 150   |
|-----------|----|-----|------|-----|------|-----|-----|-----|-----|-----|-------|
| <b>FA</b> | KA | 45  | 54,5 | 67  | 90   | 82  | 111 | 111 | 131 | 140 | 155   |
|           | KB | 6   | 6    | 7   | 9    | 10  | 13  | 13  | 15  | 15  | 15    |
|           | KC | 3   | 4    | 4   | 5    | 6   | 6   | 6   | 6   | 6   | 6     |
|           | KN | 40  | 50   | 60  | 70   | 115 | 130 | 152 | 170 | 180 | 180   |
|           | KM | 55  | 68   | 75  | 85   | 150 | 165 | 175 | 230 | 255 | 255   |
|           | KO | 6,5 | 6,5  | 9   | 11   | 11  | 14  | 14  | 14  | 16  | 16    |
|           | KP | 75  | 80   | 110 | 125  | 180 | 200 | 210 | 280 | 320 | 320   |
|           | KQ | 70  | 70   | 95  | 110  | 142 | 170 | 200 | 260 | 290 | 290   |
|           | KW | 45° | 45°  | 45° | 45°  | 45° | 45° | 45° | 45° | 45° | 22,5° |
| <b>FB</b> | KA | x   | x    | 97  | 120  | 112 | 90  | 122 | 180 | x   | x     |
|           | KB | x   | x    | 7   | 9    | 10  | 13  | 18  | 15  | x   | x     |
|           | KC | x   | x    | 4   | 5    | 6   | 6   | 6   | 6   | x   | x     |
|           | KN | x   | x    | 60  | 70   | 115 | 110 | 180 | 170 | x   | x     |
|           | KM | x   | x    | 75  | 85   | 150 | 130 | 215 | 230 | x   | x     |
|           | KO | x   | x    | 9   | 11   | 11  | 14  | 14  | 14  | x   | x     |
|           | KP | x   | x    | 110 | 125  | 180 | 160 | 250 | 280 | x   | x     |
|           | KQ | x   | x    | 95  | 110  | 142 | x   | x   | 260 | x   | x     |
|           | KW | x   | x    | 45° | 45°  | 45° | 45° | 45° | 45° | x   | x     |
| <b>FC</b> | KA | x   | x    | 80  | 89   | 98  | x   | 110 | x   | x   | x     |
|           | KB | x   | x    | 9   | 10   | 10  | x   | 17  | x   | x   | x     |
|           | KC | x   | x    | 5   | 5    | 5   | x   | 6   | x   | x   | x     |
|           | KN | x   | x    | 95  | 110  | 130 | x   | 130 | x   | x   | x     |
|           | KM | x   | x    | 115 | 130  | 165 | x   | 165 | x   | x   | x     |
|           | KO | x   | x    | 9,5 | 9,5  | 11  | x   | 11  | x   | x   | x     |
|           | KP | x   | x    | 140 | 160  | 200 | x   | 200 | x   | x   | x     |
|           | KW | x   | x    | 45° | 45°  | 45° | x   | 45° | x   | x   | x     |
| <b>FD</b> | KA | x   | x    | 58  | 72   | 107 | x   | 151 | x   | x   | x     |
|           | KB | x   | x    | 12  | 14,5 | 10  | x   | 13  | x   | x   | x     |
|           | KC | x   | x    | 5   | 5    | 5   | x   | 6   | x   | x   | x     |
|           | KN | x   | x    | 80  | 95   | 130 | x   | 152 | x   | x   | x     |
|           | KM | x   | x    | 100 | 115  | 165 | x   | 175 | x   | x   | x     |
|           | KO | x   | x    | 9   | 11   | 11  | x   | 14  | x   | x   | x     |
|           | KP | x   | x    | 120 | 140  | 200 | x   | 210 | x   | x   | x     |
|           | KW | x   | x    | 45° | 45°  | 45° | x   | 45° | x   | x   | x     |

Abmessungen in mm

Ausführung nach DIN EN / IEC 60034-1; Technische Änderungen und Irrtümer vorbehalten

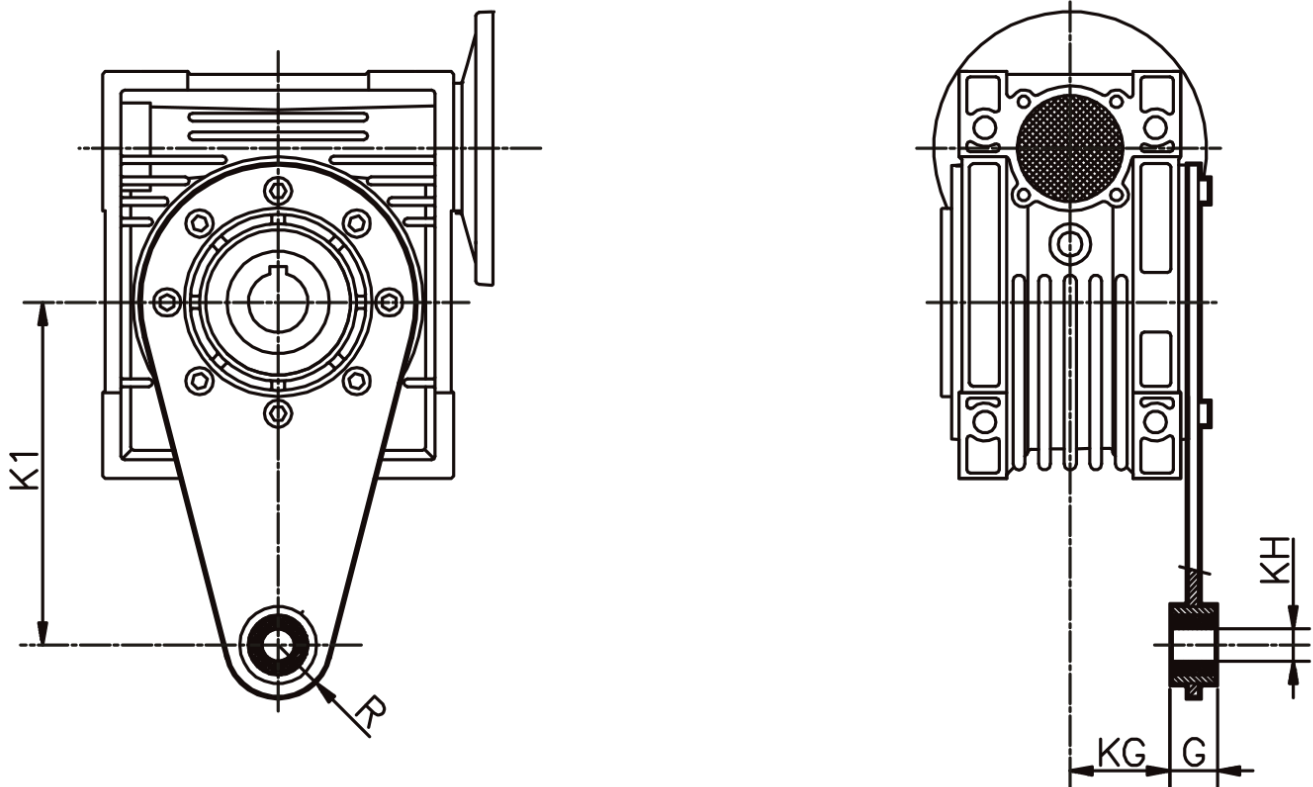
Blecher Motoren GmbH, Wilhelm-Röntgen-Straße 16-18, D-63477 Maintal

Tel.: 06181 / 428994-0, Fax 06181 / 428994-11, www.blecher.de

# Schneckengetriebe WGR 075 Drehmomentstütze



**BLECHER**  
MOTOREN ...seit 1900



|            | <b>K1</b> | <b>G</b> | <b>KG</b> | <b>KH</b> | <b>R</b> |
|------------|-----------|----------|-----------|-----------|----------|
| <b>025</b> | 70        | 14       | 17,5      | 8         | 15       |
| <b>030</b> | 85        | 14       | 24,5      | 8         | 15       |
| <b>040</b> | 100       | 14       | 31,5      | 10        | 18       |
| <b>050</b> | 100       | 14       | 38,5      | 10        | 18       |
| <b>063</b> | 150       | 14       | 49,0      | 10        | 18       |
| <b>075</b> | 200       | 25       | 47,5      | 20        | 30       |
| <b>090</b> | 200       | 25       | 57,5      | 20        | 30       |
| <b>110</b> | 250       | 30       | 62,0      | 25        | 35       |
| <b>130</b> | 250       | 30       | 69,0      | 25        | 35       |
| <b>150</b> | 250       | 30       | 84,0      | 25        | 35       |

Abmessungen in mm

Ausführung nach DIN EN / IEC 60034-1; Technische Änderungen und Irrtümer vorbehalten