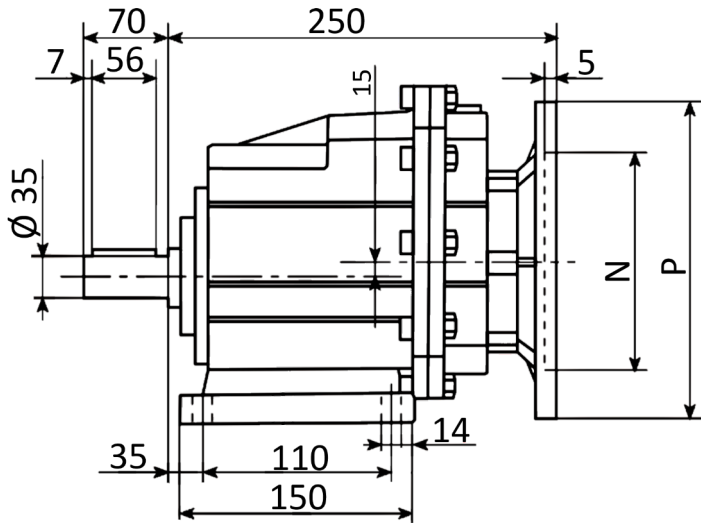
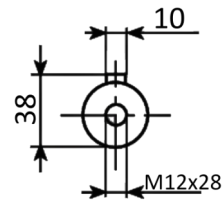
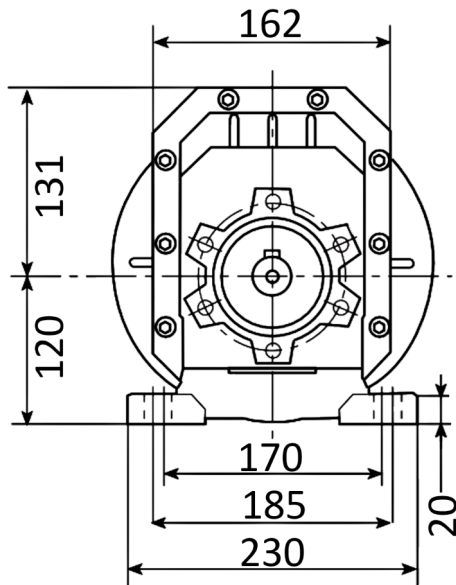




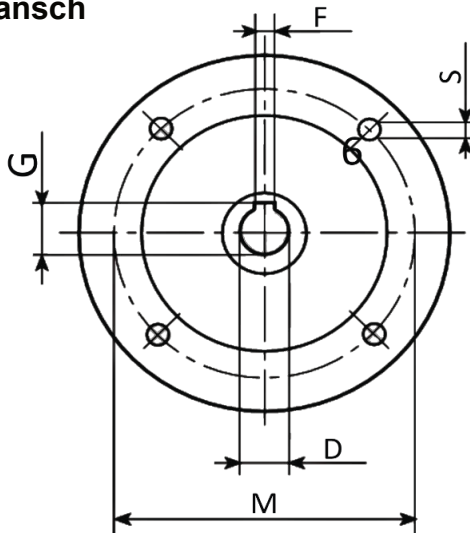
## Fußausführung



HGR 035		
IEC	P	N
80 B5	200	130
80 B14	120	80
90 B5	200	130
90 B14	140	95
100/112 B5	250	180
100/112 B14	160	110



## Inputflansch



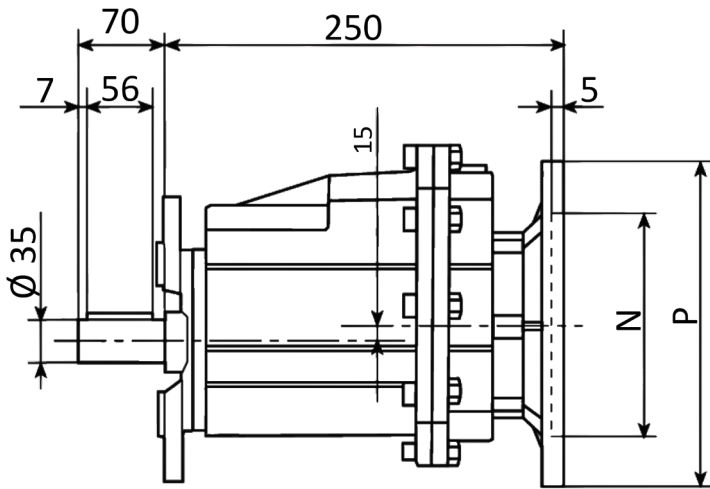
HGR 035					
IEC	D	F	G	M	S
80 B5	19	6	21,8	165	11
80 B14	19	6	21,8	100	7
90 B5	24	8	27,3	165	11
90 B14	24	8	27,3	115	9
100/112 B5	28	8	31,3	215	13,5
100/112 B14	28	8	31,3	130	9

Abmessungen in mm

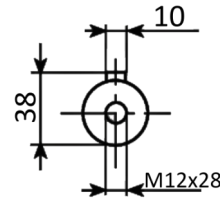
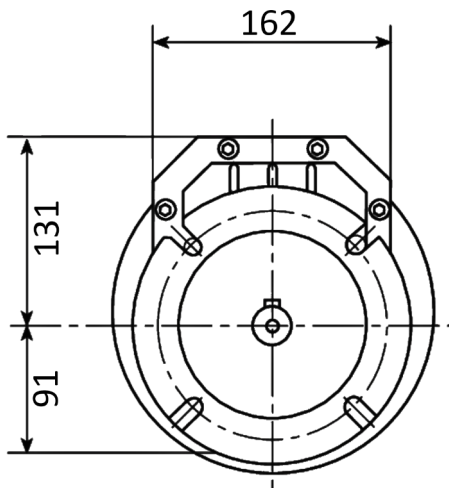
Ausführung nach DIN EN / IEC 60034-1; Technische Änderungen und Irrtümer vorbehalten



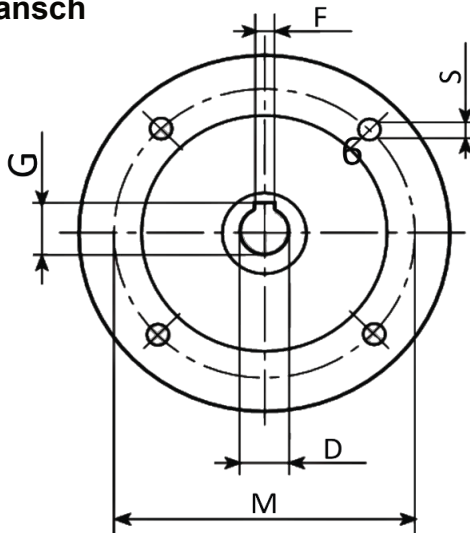
## Flanschausführung



HGR 035		
IEC	P	N
80 B5	200	130
80 B14	120	80
90 B5	200	130
90 B14	140	95
100/112 B5	250	180
100/112 B14	160	110



## Inputflansch



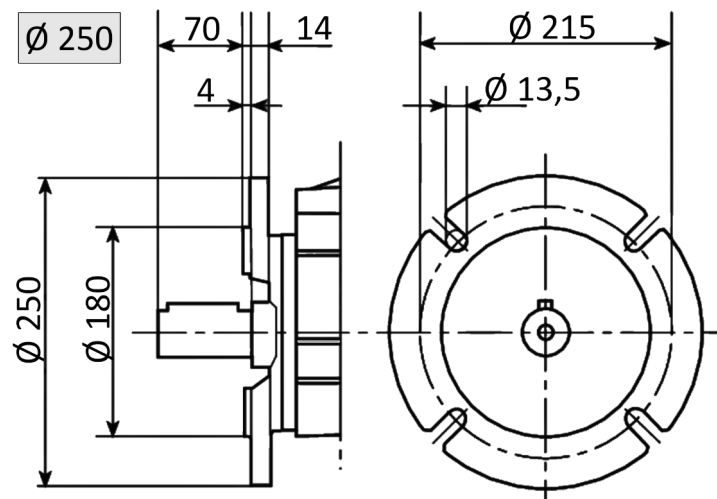
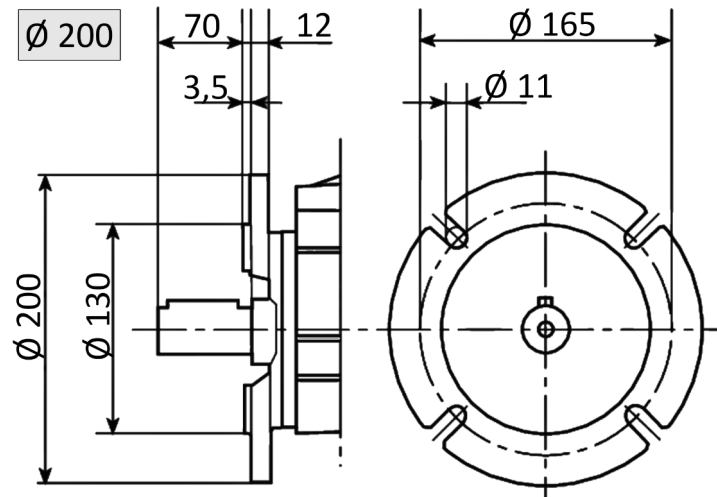
HGR 035					
IEC	D	F	G	M	S
80 B5	19	6	21,8	165	11
80 B14	19	6	21,8	100	7
90 B5	24	8	27,3	165	11
90 B14	24	8	27,3	115	9
100/112 B5	28	8	31,3	215	13,5
100/112 B14	28	8	31,3	130	9

Abmessungen in mm

Ausführung nach DIN EN / IEC 60034-1; Technische Änderungen und Irrtümer vorbehalten



**Outputflansch**



Abmessungen in mm

Ausführung nach DIN EN / IEC 60034-1; Technische Änderungen und Irrtümer vorbehalten