

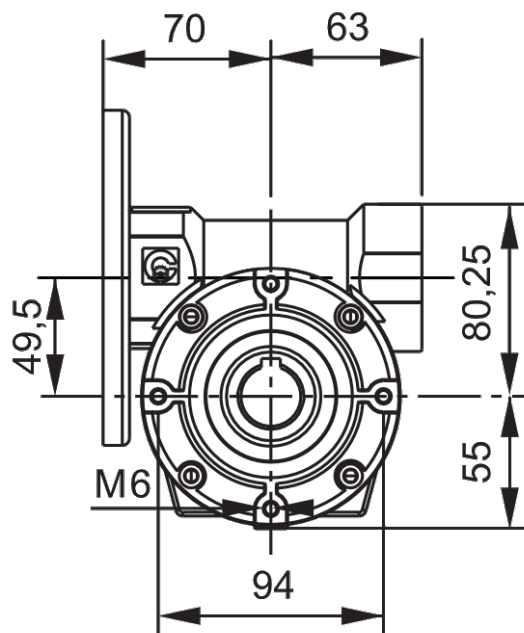
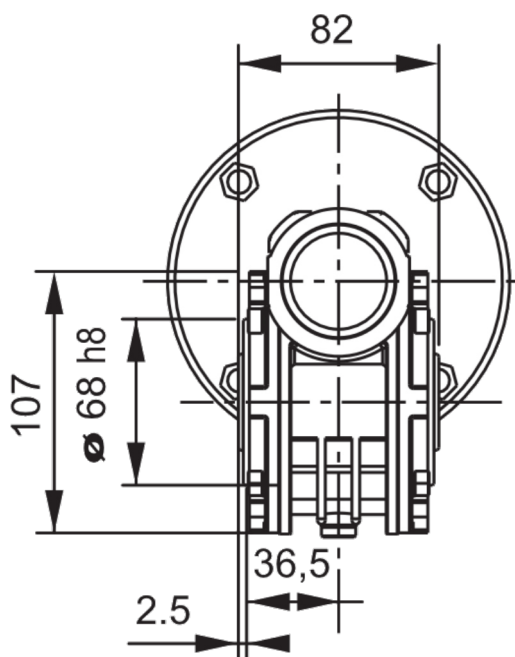
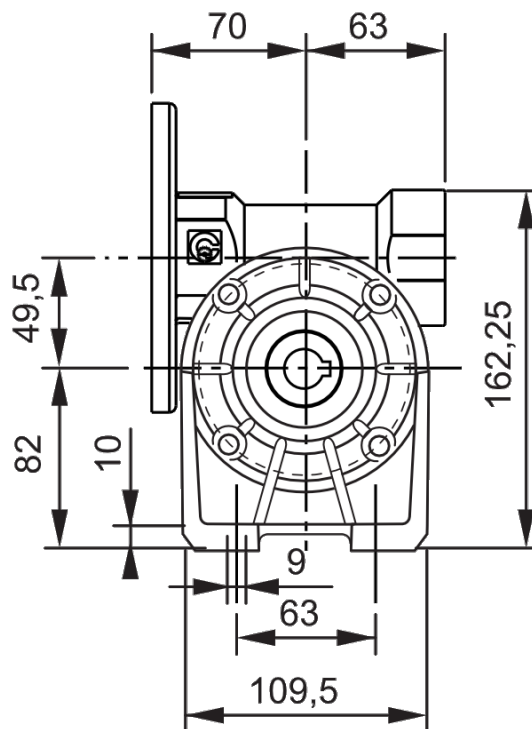
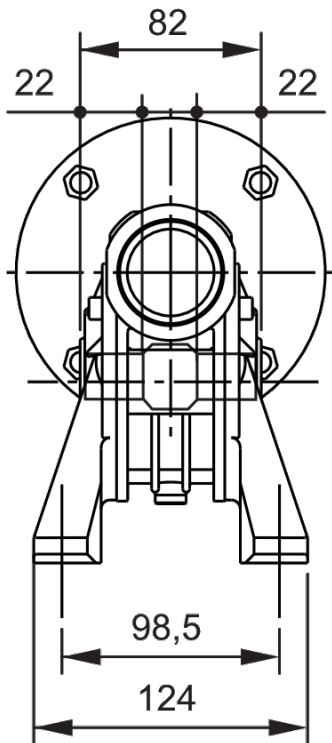
Schneckengetriebe CH 05

Standardwelle Ø25

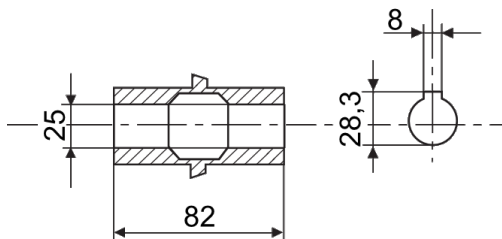


BLECHER
MOTOREN ...seit 1900

Abmessungen Grundversionen



Welle



Abmessungen in mm

Ausführung nach DIN EN / IEC 60034-1; Technische Änderungen und Irrtümer vorbehalten

Schneckengetriebe CH 05

Standardwelle Ø25

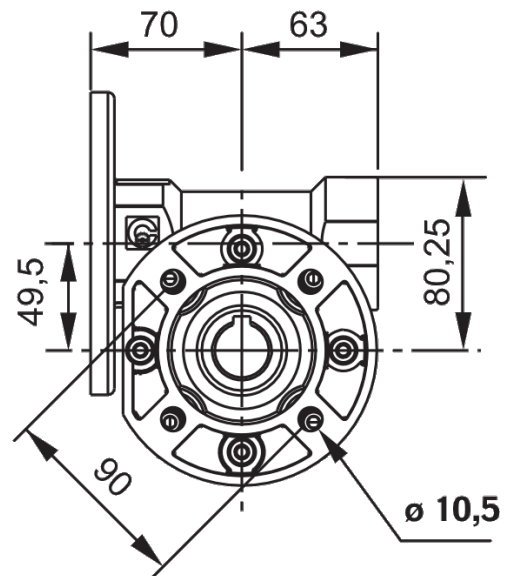
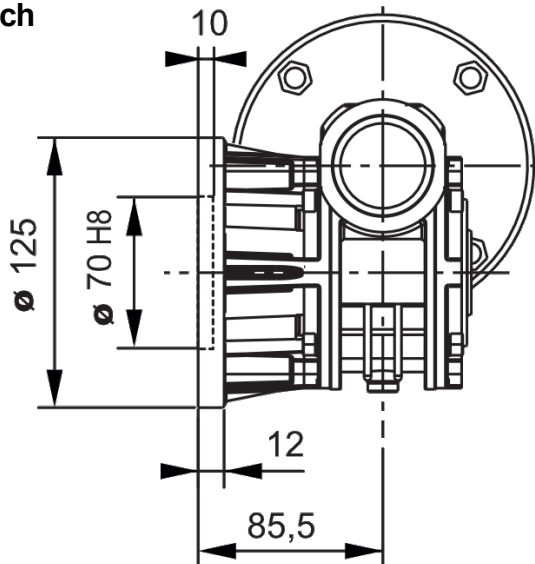


BLECHER
MOTOREN ...seit 1900

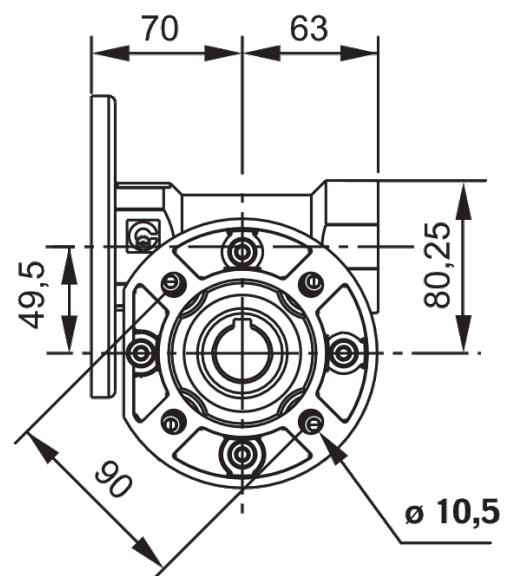
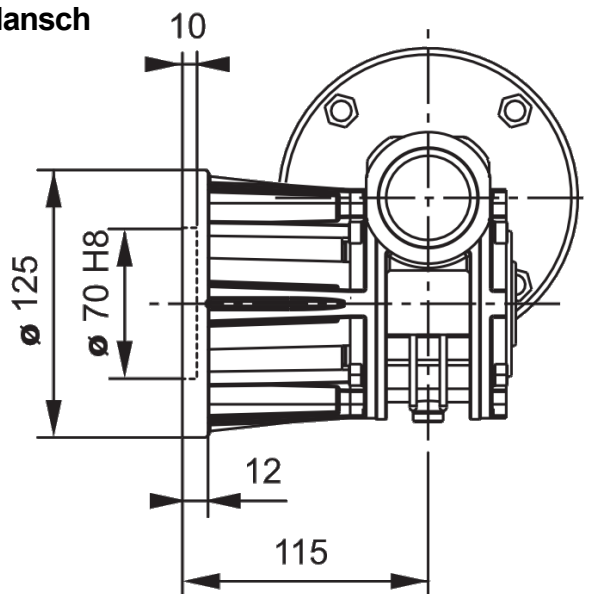
| <i>i</i> = Ratio | Umdrehungen | Leistung | Nm | Service Faktor | Anbaumaße | |
|------------------|-------------|----------|----|----------------|-----------|--------|
| 7 | 200 | 1,10 | 40 | 1,4 | 80/71 | B5/B14 |
| 10 | 140 | 1,10 | 49 | 1,2 | | |
| 14 | 100 | 0,75 | 57 | 1,1 | | |
| 18 | 78 | 0,55 | 52 | 1,1 | | |
| 24 | 58 | 0,55 | 67 | 0,9 | | |
| 28 | 50 | 0,55 | 73 | 1,0 | | |
| 36 | 39 | 0,37 | 61 | 1,1 | 71 | |
| 45 | 31 | 0,37 | 65 | 0,9 | 71/63 | |
| 60 | 23 | 0,25 | 60 | 1,0 | 63 | |
| 70 | 20 | 0,22 | 55 | 0,9 | | |
| 80 | 17 | 0,18 | 54 | 1,0 | | |
| 100 | 14 | 0,18 | 50 | 0,9 | | |

Abmessungen Flanschversionen

PF-Flansch



PFA-Flansch



Abmessungen in mm

Ausführung nach DIN EN / IEC 60034-1; Technische Änderungen und Irrtümer vorbehalten